



**Bio-Bright NY, LLC**

120 Broadway, 36<sup>th</sup> Floor

New York, NY 10271

Tel: 212.785.1010

Fax: 212.227.0954

Shawn Maloney

Vice President/ Managing Partner

Email: [smaloney@biobright-nyc.com](mailto:smaloney@biobright-nyc.com)

Cell: 917.246.0001



# How Bio-Bright Works

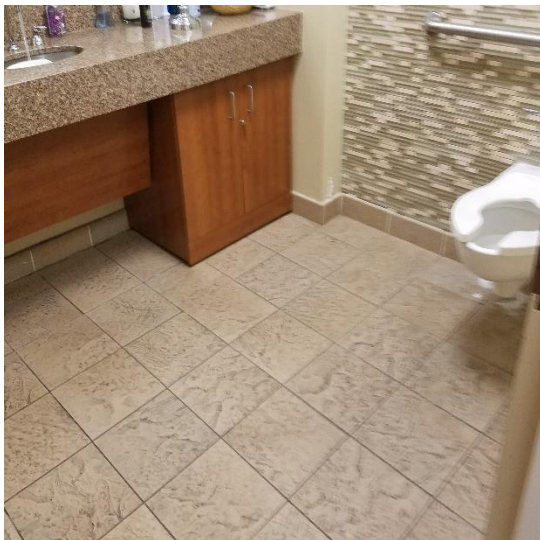
Here's a simple overview of the Bio-Bright installation and rejuvenation process:

1. Our Bio-Bright specialists clean and scrub the surface of the tiles to remove the surface layer of dirt and grime.
2. They then perform an in-depth cleaning technique that is specially designed to loosen and remove all the ground-in dirt, grime and gunk. This key step removes the sediment and caked-in dirt that causes these unpleasant odors and those shrill customer complaints.
3. Next, our specialists etch the dirty grout to remove any remaining dirt, germs and odors.
4. They prepare the grout's surface for the Bio-Bright Rejuvenator.
5. Our specialists then apply Bio-Bright Rejuvenation, which recolors and seals the grout making it look like new. This crucial step protects the grout from that constant heavy traffic and creates a barricade that keeps the dirt, grime and gunk from seeping down into the grout.
6. Finally, depending on your specific tile, our specialist may apply Bio-Seal to the tile and grout to give an extra seal to the surface of your areas for long-lasting result.

The special Bio-Bright installation process is what takes out the tough dirt on the surface of the walls and tiles, and prevents it from getting deep down into the crevices. These techniques make your areas stay cleaner, brighter and makes your cleaning staff's job much easier.

## Northwell Hospital Staff Restroom

**Before**



**After**



# Frequently Asked Questions

## **Why is Bio-Brightening different from other solutions that promise to solve the same problems?**

Bio-Bright is a unique blend of bio-degradable chemicals and special solutions that are designed to rejuvenate your tile and grout to its original base. Coupled with the specially designed installation and application process, Bio-Bright is engineered to provide a long-lasting complete solution to avoid dirt and grime. No other product on the market will last as long because Bio-Bright is a permanent solution, not masking one

## **Are there any harmful ingredients in Bio-Bright?**

No, there are no harmful ingredient's or solvents in Bio-Bright. Additionally, Bio-Bright is Bio-Degradable.

## **Will Bio-Bright ruin my grout?**

No, Bio-Bright will not ruin your grout, Bio-Bright is designed to restore, rejuvenate, and beautify your grout, not destroy it. Grout is expensive to replace and Bio-Bright was created specifically with that in mind.

## **My grout is brown. Will Bio-Bright work with that color?**

The Bio-Bright process can be done in numerous colors. The standard colors are white, gray, and sand. However, we can custom design just about any color grout that you may request. The Bio-Bright mission is to change only the cleanliness and the sanitary quality of your tiled space, not to change the design or décor.

## **My restrooms smell. Even when my cleaning staff scrubs the floors, that odor stays. Will Bio-Bright help stop this?**

Yes, Bio-Bright is designed to end those unpleasant restroom odors. Our treatment is designed to provide a deep and complete cleaning and restoration solution. The scientifically designed Bio-Bright installation process was created to clean tiles first from the outside and top, down to the bottom and inside those microscopic crevices that are common in grout and tiled surfaces. This step is designed to remove surface and grime first and then all the caked in, ground-in dirt, grime and odor producing gunk. This unique process, coupled with routine, ongoing maintenance and care will keep the odors away.

**My maintenance staff does a heavy cleaning on my tiles at least once a week, and the grout is still a mess. Will Bio-Bright fix the problem?**

Yes, Bio-Bright can reduce your staff's heavy cleaning time and effort by hours. Bio-Bright is specially and specifically designed to remove the caked-in dirt, grime and junk. Once our Specialists Bio-Bright your grout and tile, the newly treated surface will be resistant to the build-up of gunk. Therefore, Bio Bright rejuvenates your grout and tile and makes your cleaning staff's job much easier.

**Do I need to create a special maintenance staff or team to keep my Bio-Bright tiles looking like new?**

No, you do not need to create a special maintenance staff to keep your Bio-Bright tiles looking like new. Our specially designed solution and installation process which includes our sealant, means your team can perform their routine cleaning and maintenance. The only and key difference is your floors will look like new, for a fraction of the cost.

**Will you train my team on how to keep the tiles like new and get the most out of Bio-Bright?**

Yes, first our specially trained Bio-Bright team will show you and your team how to clean and maintain the tiles so you will get the most value out of Bio-Bright. Second, we will give you copies of our Bio-Bright Maintenance & Care Guide that explains step-by-step how you and your team can maintain your Bio-Bright tiles.

**How does the cost of your procedure compare to replacing my tiles?**

The Bio-Bright investment is a fraction of the cost to replace your tiles. The real value comes into play when you care for your Bio-Bright surfaces properly. If they are treated properly you will extend the life of the treatment for up to and often longer than one year.

**How long does it take to complete the Bio-Bright treatment?**

This depends on the situation that exists at your facility. The Bio-Bright process can be performed on your schedule, on your timetable, and at your convenience. Our team can devise an installation plan to implement Bio-Bright without disrupting your operation or your customers. Even if we have completed only half of the project, your room can be put back into service within a short period of time.

Typically, our specialists can Bio-Bright your areas in one day, one evening, or overnight. We find that traditional commercial restrooms can be handled from start-to-finish in just one day, one evening, or one night. Actual time will depend on how big of an area you want us to restore and how deeply in need of Bio-Bright your surfaces are.

**How much will the Bio-Bright treatment cost?**

Please contact us for an onsite evaluation.

**Do you offer demos?**

Yes, we offer demos at your convenience. Bio-Bright Customer Care Representative will visit you and your sites. We will show you firsthand at your locations the power and value of Bio-Bright.



## Maintenance & Care Guide

### WHAT TO AVOID

1. Any solution containing bleach, ammonia or floor stripper.
2. Scrubbing with bristle brushes.
3. Dirty mop water.

### MAINTENANCE AND CARE

Product Recommendation: **Neutral PH Cleaner**

#### **Procedure:**

1. Mix 4 ounces of cleaner into 2-3 gallon of warm water.
2. Apply cleaning solution to surface using sponge or mop.
3. Allow cleaning solution to dwell for 1-2 minutes.
4. Agitate solution with a natural-bristle brush or white nylon scrub pad. Do not allow solution to dry on the surface.
5. Wipe up dirty solution and rinse with clean water.

### PERIODIC HEAVY-DUTY CLEANING

Product recommendation: Bio-Bright “**Heavy Duty Tile & Grout Cleaner**”

#### **Procedure:**

1. Mix Cleaner one part to five parts of water.
2. Apply cleaning solution to surface using a sponge.
3. Allow to dwell on tile & grout surface for 3-5 minutes.
4. Agitate with nylon bristle scrub brush. Do not allow solution to dry on the surface.
5. Wipe up the dirty solution.
6. Rinse thoroughly with clean water.